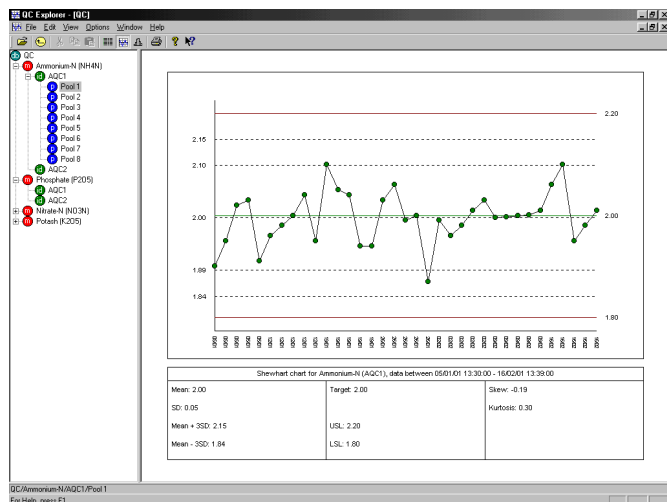


AQC Explorer

Easy to use AQC Database Software

Introduction

AQC Explorer allows you to manage, archive and plot AQC data, enabling you to monitor instrument performance and analyse the analytical process itself.



Designed to directly import AQC data from data files created by the MicroStream continuous flow and flow injection data processor, and the ModuLab range of analysers, recording data in the database is incredibly easy.

Once the data is in the database, different reports can help you visualise analyser performance.

Features

AQC data for a given AQC sample is recorded using a combination of 'Method' or 'Determinand Name' and 'Sample ID' allowing multiple AQC levels per method. The data is allocated into pools as it is imported.

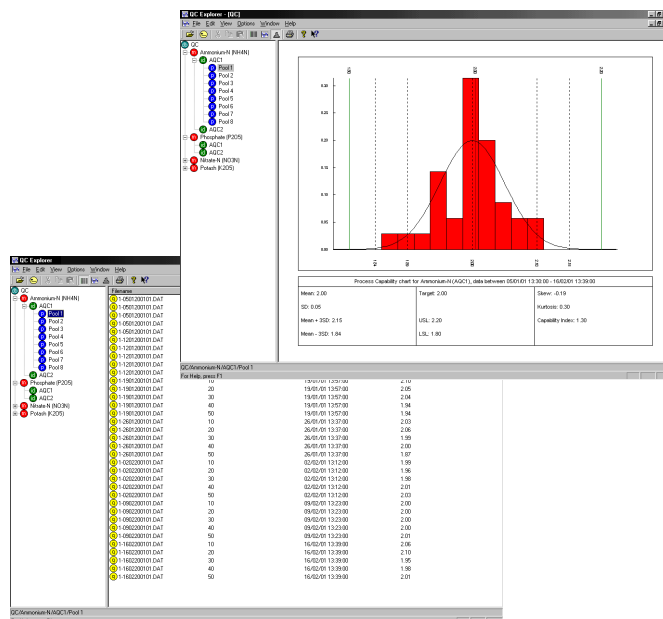
AQC Explorer allows creation of as many databases as required to suit your needs, allowing data from different sources to be easily segregated. Unlimited methods per database are allowed for maximum flexibility. It is possible to configure unlimited AQC levels per method. Configurable Pool Sizes allow for adjustment with regard to the frequency of analysis. It is possible to specify limits independently for each AQC level. These limits can be used to calculate additional process characteristics such as a Capability Index.

Data for each AQC pool can be displayed in tabular fashion, as a standard run or 'Shewhart' chart and also as

a process capability chart. Each type of display can highlight anomalies or trends in the data in different ways. Of course, any of these report types can be printed to any Windows compatible printer.

Data is presented in a straightforward tree-like hierarchical structure which will be immediately familiar to anybody who has used the Microsoft Windows Operating System. Coupled with a standard Windows style user interface the amount of training required to use the software is absolutely minimal. Fully integrated context sensitive help is included as well as a manual in Portable Document Format, and a printed manual can be supplied if required.

The database engine used to store AQC data is Microsoft Access Jet, and so, although the Access package itself is not required in order to use the software, the data is available should the need arise and not locked away in an obscure proprietary format.



System Requirements

- Personal Computer with a Pentium Class Processor
- Microsoft Windows 95 / NT4 or later operating system
- 32 MB Memory
- 5 MB Hard disk space plus database space
- CD-ROM Drive
- Super VGA Resolution Monitor
- Microsoft Mouse or compatible pointing device